

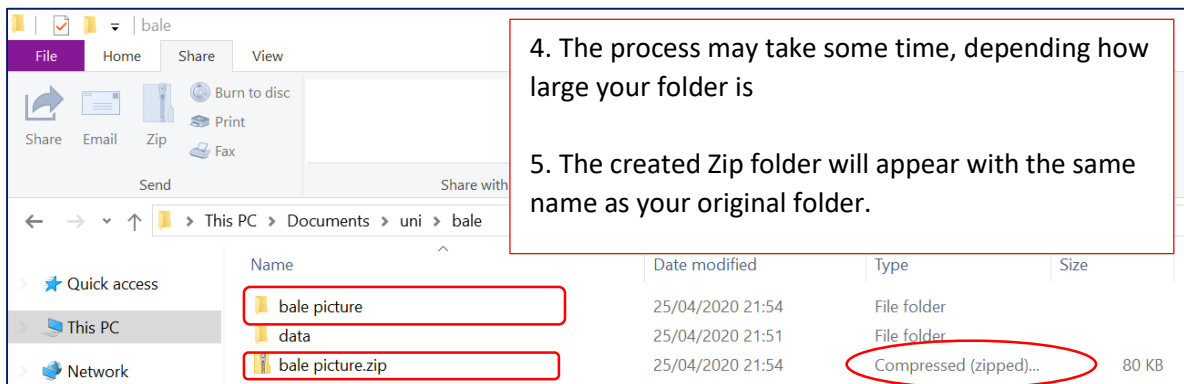
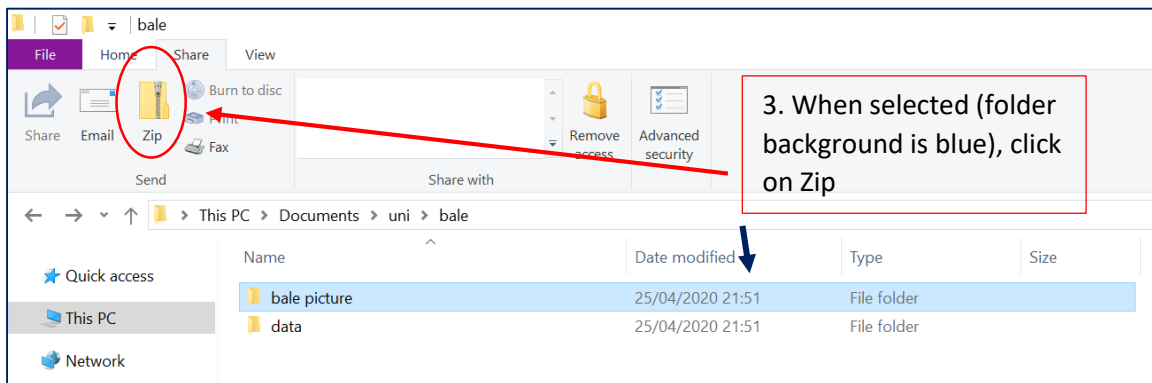
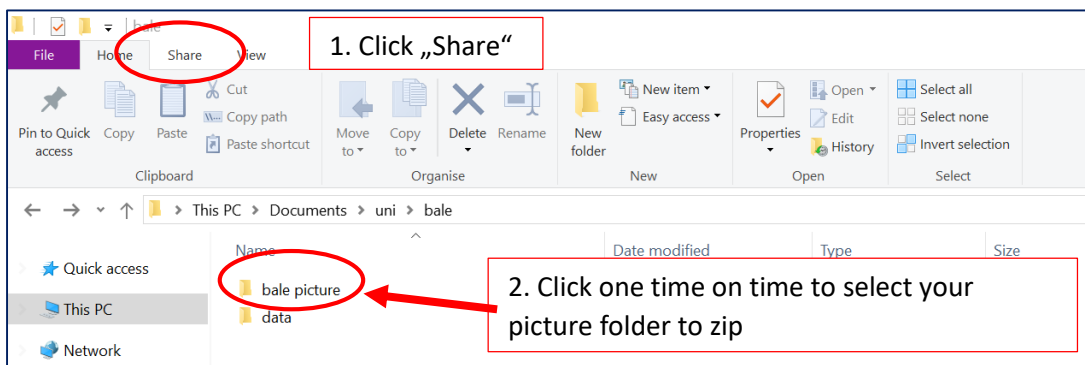
Photo Guide

Preparation

Before you upload your photographs from your field or lab work, please go through them and check for blurred, doubles or non-relevant images !

Step guide:

1. Please make a ZIP file from your photo folder. Under Windows see the following steps.



2. Make sure that your final ZIP folder has an easy recognizable name.

project group: P1-P7, C1,C2

photographer initials 2 or 3 e.g. GM, LMW, VR, MAM, DS, GGR,....

fw or lw : field or lab work documentation

year: for year of photographs e.g. 2016...2020...

folder identification: 01,02,03....99

Examples:

P3_GM_fw_2016_01 -> P3 group, Georg Miehe, field work, year 2016, folder 01

P4_VR_fw_2020_02 -> P4 group, Victoria Reuber, fieldwork, year 2020, folder 02

P6_AG_lw_2018_01 -> P6 group, Alex Groos, lab work, year 2018, folder 04

3. Go to: <http://vhrz669.hrz.uni-marburg.de/bale/>

4. Log-in to the database

5. Click on the header "Data" and choose "Add new data set"

6. Click on "Add other format"

7. Scroll to the bottom and click on File: "Searching for"

8. Choose your ZIP folder and press "upload to data base"

9. Follow further instructions as described below:

Data Services

- Timeseries data
- Remotesensing data
- Other data
- Add new dataset
- Create attribute

Quick search

Publications:

Datasets:

Persons:

Keywords

Datasets / Publications

analysis csv giant mole rat glacial
chronology gps location map
mole rats overview map p1 P3
p4 p5 p6 pdf rockshelters
settlement shp sites timeseries
fire g tactalogy observation

Data Documents Publications

Timeseries data

Remotesensing data

Other data

Add new dataset

Create attribute

base of the DFG research unit 2358 "The Mountain Exile Hypothesis".

such as:

(raster images, analysis, results)

(templates etc.)

- Workshop meetings

Some information is public and accessible to all visitors. Please log in to gain full access to the data base.

Visit our [homepage](#) to learn more about the project, team, study area and subprojects.

Remotesensing data:

Click [here](#) to view geodata and remote sensing data.

Timeseries data:

Click [here](#) to view timeseries of climate data.

Other data:

Filter data by project:

P1	P2	P3	P4	P5	P6
		<input type="button" value="Search"/>	<input type="button" value="Show all"/>		
1	2	3	4	Next	Last

Overview

1-10 of 47 datasets.

(Click for the detailed view)

- » [Bale Mountains Borderline of National Park](#) created by: Luise Wraase (last update: 2018-12-03)
- » [Active fire product \(VIIRS, 375 m\)](#) created by: Luise Wraase, Ulrike Selig (last update: 2019-01-09)
- » [Analogue terrain maps from Batu, Goba, Hako, Rira](#) created by: Ulrike Selig (last update: 2019-01-21)
- » [C2 & P3 3D-Giant Molerat Mound Plot](#) created by: Philipp Kurth, Luise Wraase (last update: 2019-05-06)
- » [C2 & P3 Giant Molerat Mounds Map](#) created by: Philipp Kurth, Luise Wraase (last update: 2019-05-06)
- » [C2 & P3 Modelled Giant Molerat Mounds](#) created by: Philipp Kurth, Luise Wraase (last update: 2019-05-06)

- ### Data Services
- Timeseries data
 - Remotesensing data
 - Other data
 - Add new dataset
 - Create attribute

Quick search

Publications:

Datasets:

Persons:

Keywords

Datasets / Publications

Data Documents Publications

Add new dataset - What kind of data do you want to submit?

» Add timeseries data



Link to Timeseries data

eg. timeseries of measurement, collection lists...

» Add remotesensing data



Link to Remote Sensing data
(different upload procedure)

eg. DEM, satellite or aerial images, mod

» Add other data format

eg. coring, analysis, lab results etc.

Project Home

» Browse the "Attribute Category Tree" to find the fitting attributes for your data. The tree contains all available attributes, their names, and definitions.

Quick search

Publications:

Datasets:

Persons:

1. Step
Your files that will be uploaded here as an "other entry" should not contain data that could be represented in a table or in a spatial raster. An other entry should contain complementary information to a tabular or raster entry. This allows to organize related files with different data types within one data set.
You can also upload text files (MS Word document, PDF, plain txt), but you should try to transfer all meta information into the meta data structure during the tabular or raster data. Publications should be uploaded in the Publication section and it should be referred to it in the meta data fields.
Each other entry can hold one file or several files as file package (e.g. a set of ArcGIS files or a series of photos).
Think about how you can use the upload of additional information as an other entry and add it to the data set.
Keep in mind that proprietary file formats might be inaccessible for other users or in the future.

2. Step (optional)
You can select an attribute from the attribute list for your file and its content. Browse the "Attribute Category Tree" to find the fitting attributes for your data. The tree contains all available attributes, their names, and definitions.
You will be asked for the attribute during the upload process and you will have to describe the method how you collected and processed this data. The attribute contains the information on the values in this file. The attribute list provides the defined attributes. If you need an other/new, send a mail with your specifications to webmaster@icrs.de

3. Step
You will be guided through a wizard, to insert meta information:
• first: (Only when an attribute has been chosen.) specific information about the attribute which represents the content of the file (method of sampling/measurement)

Click on the image to see the detailed work flow.

• second: (Only when it is the first entry of a data set.) general information about the dataset (creator, geographical and temporal coverage, access permissions, abstract etc)

Click on the image to see the detailed work flow.

Select File (max.: 5,000,000,000 bytes):

File: Keine Datei ausgewählt.

and

Select File (max.: 5,000,000,000 bytes):

File: Keine Datei ausgewählt.

and

- ### Data Services
- Timeseries data
 - Remotesensing data
 - Other data
 - Add new dataset
 - Create attribute

Quick search

Publications:

Datasets:

Persons:

- ### Keywords
- Datasets / Publications
- ecology afroalpine
 - vegetation Ericaceous
 - vegetation
 - archaeology GPS
 - mapping biogeochemical
 - biomarker c2
 - charcoal High-altitude
 - habitation ice age
 - isotopes lake
 - sediment Lake Tana
 - P3 p4 p5 Pastoralism
 - pollen sediment
 - Settlement history
 - vegetation

Data Documents Publications

Upload a data file (package).

Chose a self-explanatory file name:
e.g. P4_VR_fw_2020_02

Please give a name to this part (we call this "entity") of your dataset (preset from filename):

You can add separate notifications to this element (max. 255 chars):

OPTIONAL

The **entity type** describes the kind of data represented in the entity, such as photograph, sketch

What type:
photograph, table etc.

File format:

We tried to find a fitting description of the file format for each of the files you uploaded, based on

File extension description for **file#1** *outputdf_.csv*:

Either **a)** select one from the list of predefined formats:

Or **b)** give us a general description for this file extension (csv):

Name (eg. Excel)[required]:

Version (eg. 2011)[optional]:

Drop-down menu:
most data are recognized and
already included

[Back...](#)

Data Services

- Timeseries data
- Remotesensing data
- Other data
- Add new dataset
- Create attribute

Quick search

Publications:

Datasets:

Persons:

Keywords

Datasets / Publications

- ecology afroalpine
- vegetation Ericaceous
- vegetation
- archaeology gPs
- mapping biogeochemical
- biomarker c2
- charcoal High-altitude
- habitation ice age
- isotopes lake
- sediment Lake Tana
- P3 p4 p5 Pastoralism
- pollen sediment
- Settlement history
- vegetation

Data Documents Publications

Welcome to the project data base of the DFG research unit 2358 "The Mountain Exile Hypothesis".

General dataset descriptions

Title:

Short name:

Keywords: Available keywords:

3D afroalpine vegetation afroalpine analysis anthrosols

Quicksearch/Add new keyword:

Abstract:

Additional info:

Intellectual rights:

Language of the dataset: Numeric values

Publication place:

Publication date: 2019-06-13

DOI:

Chose display-title: Always begin with your subproject e.g. P4 Photos field work 2020_02

Shortname: not necessary

Keywords: 2-3 keywords per item

Abstract: Short Summary of what can be found or the data set used for.

Additional Info: Extension of Abstract-optional

Intellectual rights: Who created the data and who processed it?

Language: Either Language or Numeric for numbers

Publication Place & Date

DOI: optional

Geographic coverage

Predefined coverages:

Bale Mountains
Marburg

 Show in MapViewer

Create new geographic coverage item...

Extent is mandatory!

For fieldwork Data chose Bale Mountains
For everything else add/chose your city

 Quicksearch

Temporal coverage

Start date: ...

End date: ...

Timezone:


Timezone difference/hours:



Temporal coverage is mandatory!

Start and End Date can be the same.



Timezone: e.g. Addis Ababa or Berlin

Ownership/Responsibilities

Project: 

 Resource creators: 

 Wraase, Luise 

 Associated party: 

 Corresponding contacts: 

 Wraase, Luise 

Available persons

A, Savinetsky
Aberra, Roman K.
Addis, Agerie
Adolf, Carole
Akgar, Naki
Annys, Sofie
Aparicio, Abelardo
Asrat, Asfawossen
Babenko, A
Bates, C. Richard

 Quicksearch

Project: e.g. C2, P7 ...

Resource Creators: Who is responsible, who can be contacted?

Multiple entries possible